



# **OWENS CORNING® ENCLOSURE SOLUTIONS**

**FIBERGLAS™ FOAMULAR® THERMAFIBER®**



**EDITH GREEN-WENDELL WYATT FEDERAL BUILDING (MODERNIZATION)**

Portland, OR

**PRODUCTS USED:**

Thermafiber® FireSpan® 90 Curtain Wall Insulation

Thermafiber® Safing Fire Containment Insulation

Thermafiber® Impasse® Insulation Hanger System



# OWENS CORNING® ENCLOSURE SOLUTIONS

PROTECT YOUR BUILDING AND YOUR REPUTATION

Owens Corning® Enclosure Solutions offers one of the largest portfolios of commercial insulation products for walls, roofs and below-grade foundations.

Engineered with Owens Corning technical expertise and backed by Building Science, Owens Corning® Enclosure Solutions deliver buildings that perform without compromising design.

## The Best Components, Working Together

---

- **Trusted Brand** – We've paired the Owens Corning® insulation products you know and trust with specialized components from other industry-leading manufacturers.
- **Customizable** – You can swap in different components to create a system that meets your exact specifications and preferences, and each system is tested together for performance, reducing your liability.
- **Compliant** – The result is a total solution designed for optimum durability, energy performance and fire containment that meets today's standards and anticipates tomorrow's standards.
- **Speed to the Market** – The time consuming work of researching and specifying individual products is completed for you and delivered with fully detailed documentation, for efficient and accurate bidding and planning.

## Flexibility is Built-in

---

While Owens Corning® Enclosure Solutions are carefully engineered to work as total systems, Owens Corning understands that every project and every contractor still has special needs. With an Owens Corning® Enclosure Solution, you're not limited on every component. Owens Corning® Enclosure Solutions gives you total confidence, total convenience and total choice.



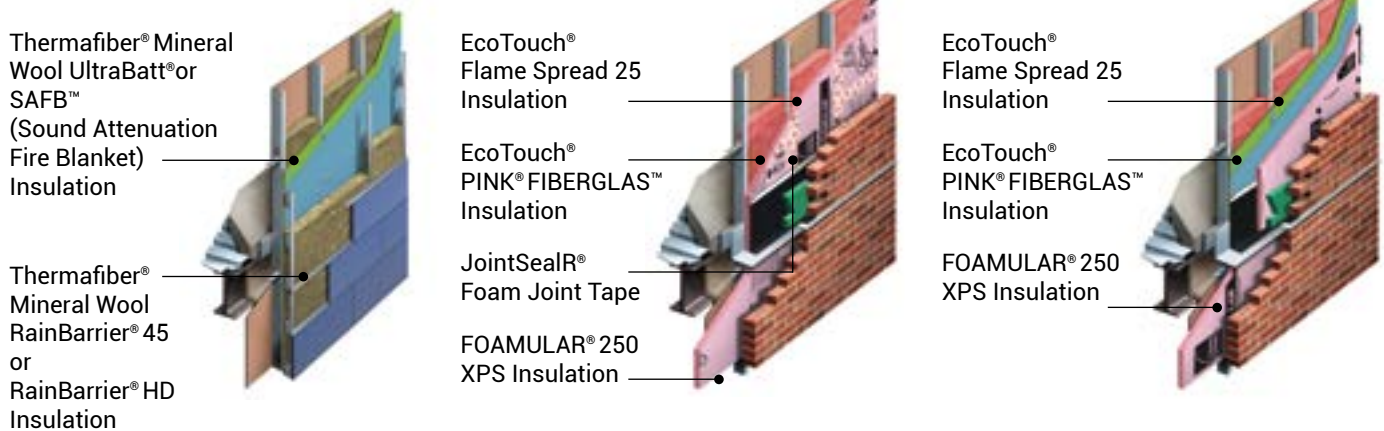
Bullitt Center, Seattle, WA



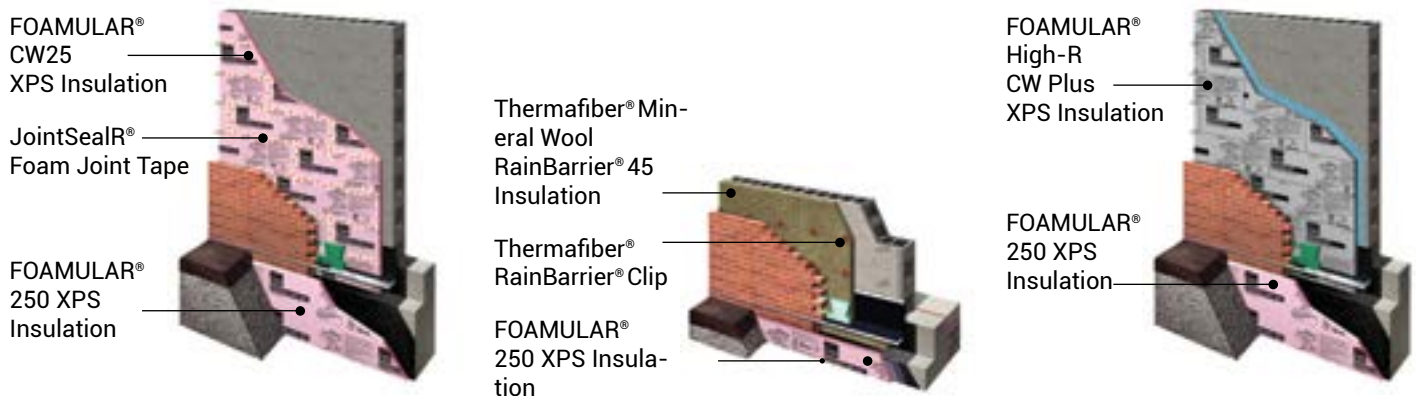
# ENCLOSURE SOLUTIONS COMMON WALL CONSTRUCTION TYPES

FLEXIBLE COMPONENT OPTIONS | INSULATIONS FOR YOUR BUILDING NEEDS

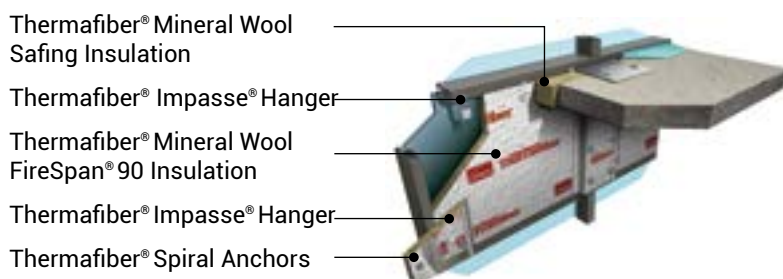
## Steel Stud Solutions:



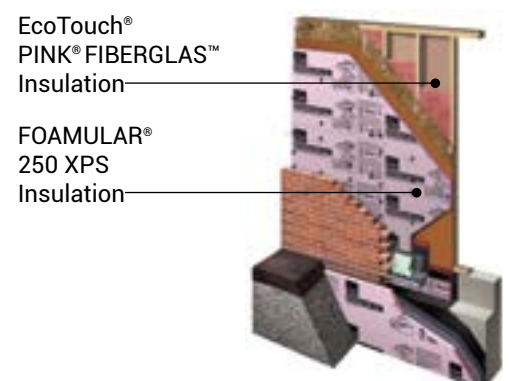
## Concrete Masonry Unit Solutions:



## Curtain Wall Solutions:



## Wood Stud Solutions:



More construction types are available at [owenscorning.com/enclosure](https://www.owenscorning.com/enclosure)

## Owens Corning® Enclosure Solutions Deliver Top Performance In:



### Moisture Management



### Thermal Efficiency



### Fire Resistance



### Air Resistance



### Acoustic Control

## Our Resources are Your Resources

Owens Corning's specialized technical experts are available to consult with your firm on a number of design challenges related to commercial construction.

Our nationwide Architect, Engineer and Contractor (AEC) Solutions team is a nationwide team available to provide specification review, thermal calculations, AIA/CES continuing education presentations, and product recommendations.

Thermafiber Insolutions® offers industry leading technical and engineering assistance on perimeter fire containment systems with engineering judgments for customized mechanical attachment plans, modified mullion designs and more.

Our Building Science team fully understands how our products and system solutions perform to provide testing and technical data to design climatically tuned buildings with in-depth thermal, moisture and energy analysis.

## Additional Resources are available at: [owenscorning.com/enclosure](https://www.owenscorning.com/enclosure)

### Resources include:

- NFPA 285 Design Guide
- BIM objects
- Testing and technical data
- CAD Drawings
- LEED® Credit Information

### Contact us:

Via phone call  
[1-800-GET-PINK®](tel:1-800-GET-PINK)

Via email at  
[GETTECH@owenscorning.com](mailto:GETTECH@owenscorning.com)

# PROJECT SPOTLIGHTS

## FLEXIBLE SOLUTIONS TO MEET CODE | LOCATION REQUIREMENTS | DESIGN GOALS



**Solutions** | Maritime Climate, LEED® Gold Certification

### DISCOVERY HALL, UNIVERSITY OF WASHINGTON

**THA Architects** — Bothell, WA

Completed in 2014, the Discovery Hall at The University of Washington needed solutions to combat the moisture-rich northwest maritime climate. Owens Corning® Thermafiber® RainBarrier® 45 Continuous Insulation was specified in the wall assembly to deliver thermal protection and moisture resistance properties that help control the infiltration of rain and moisture that can lead to rot and mold. With a minimum of 70% recycled content, Thermafiber® mineral wool insulation also contributed toward valuable LEED® credits, helping the building earn a LEED® Gold certification.



**Solutions** | Sustainable Goals, LEED® CS Gold Certification

### ONE WORLD TRADE CENTER

**Skidmore, Owings and Merrill** — New York, NY

Thermafiber® FireSpan® 90 Curtain Wall Insulation was selected for use in conjunction with Thermafiber® Safing Fire Containment Insulation to achieve outstanding fire protection in curtain wall and perimeter fire containment systems. Additionally, a custom designed Thermafiber® Impasse® Insulation Hanger System and Advantex® Corrosion Resistant Glass Fiber Reinforcements were also developed to make installation simple, accurate and fast. This collection of Owens Corning insulation products, in addition to FOAMULAR® 1000 and EcoTouch® SABs, contributed to the overall project sustainability goals by helping the building earn a LEED® CS Gold certification.



**Solutions** | Fire Safety, LEED® Platinum Certification

### EDITH GREEN-WENDELL WYATT FEDERAL BUILDING

**Cutler Anderson Architects, and SERA Architects** — Portland, OR

Stunning design, outstanding fire safety measures and energy efficient construction were the hallmarks of the remarkable transformation of the 18-story, 536,00 square foot Edith Green-Wendell Wyatt Federal Building. The customized building enclosure solution incorporated Thermafiber® FireSpan® 90 Curtain Wall Insulation and Thermafiber® Safing Fire Containment Insulation and a Thermafiber® Impasse® Insulation Hanger System to achieve the perimeter fire containment system. With its high recycled content, the installed Thermafiber® mineral wool insulation products contributed towards the building earning a LEED® Platinum certification.



**Solutions** | Acoustic Control, Energy Efficiency

### UNIVERSITY OF MICHIGAN NORTH QUAD

**Robert A.M. Stearns Associates** — Ann Arbor, MI

It took more than five years of planning to build the 370,000-square-foot, \$175 million building that represented the first new student housing on the University of Michigan campus in three decades. The architectural design firm specified Thermafiber® RainBarrier® 45 mineral wool insulation in the masonry cavity wall construction to maximize energy efficiency, fire containment and acoustical control.



## INSTITUTIONS | COMMERCIAL BUILDINGS | HEALTHCARE FACILITIES

### MISSION MY CARE PLUS

**HDR Architects** — Asheville, NC

Completed in 2014, Mission My Care Plus Leicester, a Medical Group Practice located in Asheville, NC, used FOAMULAR® 250 Continuous Insulation and JointSealR® Foam Joint Tape in the construction of the three-story, 34,500-square-foot, Medical Office Building serving Western NC residents and visitors, specifically in the Asheville area.

The Owens Corning® high-performance insulation solutions helped conserve energy, improve acoustics, and ease installation and use.



**Solutions** | Conserve Energy, Improve Acoustics

### RONALD MCDONALD HOUSE

**Duket Architects** — Toledo, OH

Owens Corning contributed building science expertise and donated a range of 16 different fiberglass, foam, and mineral wool insulation products and systems to help the Ronald McDonald House build its new Toledo location in 2015. FOAMULAR® Extruded Polystyrene (XPS) Insulation was among the solutions used in the building's enclosure wall cavities. Thermafiber® RainBarrier® 45 Continuous Insulation was also used to support fire resistance in the cavity walls, and EcoTouch® PINK® FIBERGLAS™ insulation faced with a foil vapor retarder supported fire resistance and vapor transmission resistance.



**Solutions** | Fire Resistance, Vapor Transmission Resistance

### KENT STATE COLLEGE OF ARCHITECTURE

**Weiss / Manfredi** — Kent, OH

Completed in 2016, the \$49 million Kent State Center for Architecture and Environmental Design represents bold, contemporary building design. Weiss / Manfredi lead the construction team on the cutting-edge 117,000 square-foot school building. The team incorporated the easy-to-install FOAMULAR® 250 Continuous Insulation to minimize thermal bridging. With a minimum of 20% recycled content, the installed FOAMULAR® 250 insulation also contributed to sustainable design features that could help it win a LEED® Platinum rating, the highest available under the U.S. Green Building Council's LEED® program.



**Solutions** | Improve Acoustics, LEED® Platinum Certification

### SAN MATEO COUNTY MAPLE STREET CORRECTIONAL CENTER

**Hellmuth, Obata + Kassabaum (HOK)** — Redwood City, CA

Completed in 2015, the \$165 million San Mateo County Maple Street Correctional Center project represented an innovative design approach for a corrections complex. It utilized both FOAMULAR® 250 Continuous Insulation and JointSealR® Foam Joint Tape in the construction of the sleek, 260,000-square-foot sustainable construction project. With a minimum of 20% recycled content, the installed FOAMULAR® insulation supported the design goal of earning a LEED® Silver certification.



**Solutions** | LEED® Silver Certification



**Owens Corning** delivers high-performance insulation solutions through a full line of fiberglass, foam and mineral wool products and systems. These products and system solutions help conserve energy, improve acoustics and ease installation and use. These qualities add up to preferred insulation products for residential and commercial construction and industrial applications.

For more information on Owens Corning® Enclosure Solutions visit [owenscorning.com/enclosure](https://www.owenscorning.com/enclosure) or call **1-800-GET-PINK®**



**OWENS CORNING INSULATING SYSTEMS, LLC**

One Owens Corning Pkwy  
Toledo, OH 43659 USA

**1-800-GET-PINK®**

**[www.owenscorning.com](https://www.owenscorning.com)**

Pub. No. 10020901-B. Printed in U.S.A. April 2019.

THE PINK PANTHER™ & © 1964–2019 Metro-Goldwyn-Mayer Studios Inc. All Rights Reserved.

The color PINK is a registered trademark of Owens Corning. © 2019 Owens Corning. All Rights Reserved.