



# SELECTSOUND® BLACK ACOUSTIC BOARD & BLANKET

## INSTALLATION INSTRUCTIONS

SelectSound® Black Acoustic Board and Blanket are usually impaled over stick/welded pins or adhered to flat surfaces. For irregular surfaces, they are cut in segments and adhered in place.

### INSTALLATION

Product should be kept dry during shipping, storage, and installation.

SelectSound® Black Acoustic Board and Blanket can be easily cut with a knife and fit neatly into irregularly shaped areas. SelectSound® Black Acoustic Board and Blanket can be applied using mechanical fasteners, such as weld pins or speed clips. Fasteners shall be located not less than 3 inches (75mm) from each edge or corner of the board.

Pin spacing along the equipment should be no greater than 12 inches (300mm) on centers. Additional pins or clips may be required to hold the insulation tightly against the surface.

Weld pin lengths must be selected for tight fit but avoid "oil-canning."

### FOR VERTICAL APPLICATIONS

SelectSound® Black Acoustic Board and Blanket can be installed between furring strips, hat channels, and Z-shaped furring where a finish will be applied. For exposed applications, the product can be impaled on impaling pins or adhered with adhesive.

### FOR HORIZONTAL APPLICATIONS

SelectSound® Black Acoustic Board and Blanket can be installed on horizontal surfaces by using impaling pins.

### ON MASONRY CONSTRUCTION OR PRECAST CONCRETE

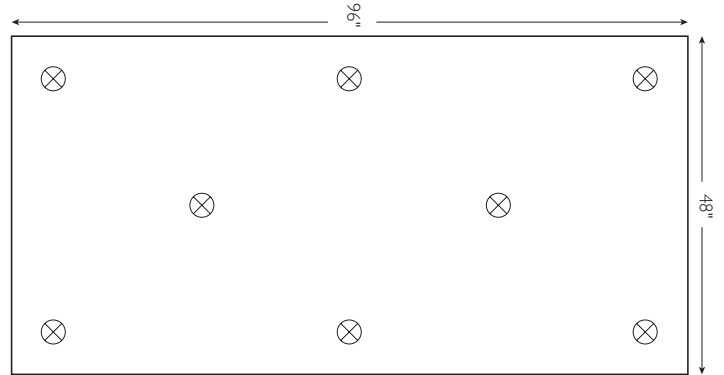
SelectSound® Black Acoustic Board and Blanket can be installed on the interior face with stick pins, or by using appropriate adhesives.

When using adhesive, follow adhesive manufacturer's recommendations for surface preparation and adhesive pattern.

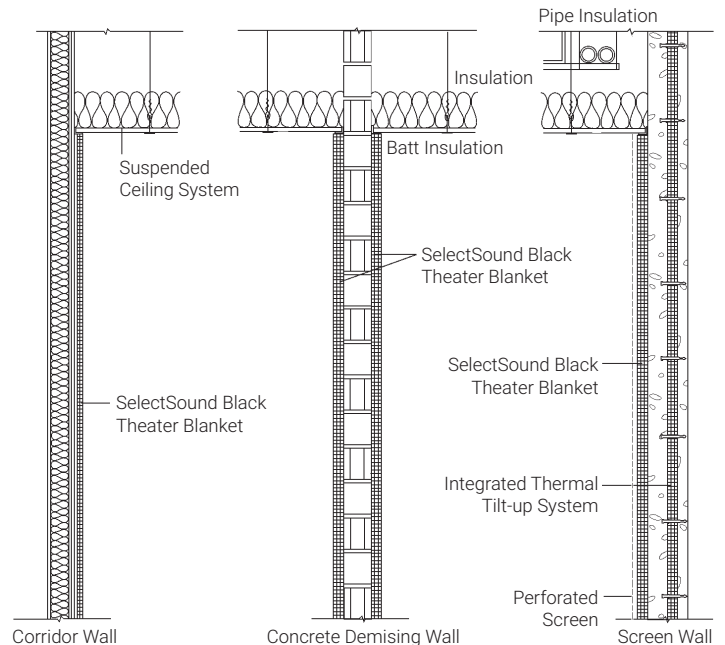
When using stick pins/impaling pins, follow pin manufacturer's recommendations for surface preparation. Lengths should be selected for tight fit. Protect pin tips where subject to contact. Pins should be located 3 to 8 inches from the edge(s) of the board and blanket.

### SELECTSOUND® BOARD AND BLANKET RECOMMENDED IMPALING PIN PATTERNS

Pins should be located 3"-8" from the edges of the board.



### CONCEPTUAL DETAILS



For CSI type sample specification, please contact your local Owens Corning representative.

**OWENS CORNING INSULATING SYSTEMS, LLC**  
ONE OWENS CORNING PARKWAY  
TOLEDO, OHIO, USA 43659

**1-800-GET-PINK®**  
[www.owenscorning.com](http://www.owenscorning.com)