

TotalFlash[®] Cavity Wall Drainage Solution

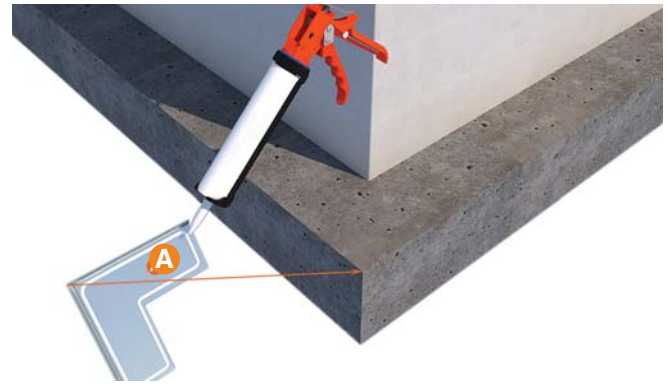


Notes

- The use of Carborundum Saw blades to cut the metal drip edge can result in a slight surface rust on any exposed metal.
- Supplied self-tapping, self-sealing screws for attaching integrated termination bar require a 5/16" nut driver.

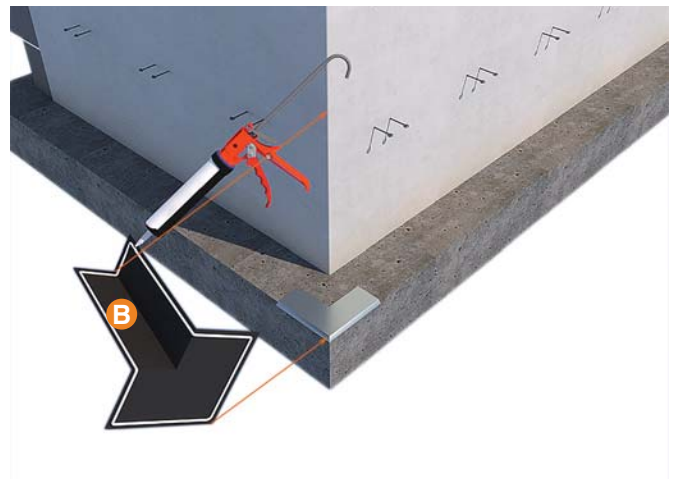
Step 1

Install prefabricated adjustable metal corner from Mortar Net Solutions.[™] Apply 1 bead of BTL-1 modified polyether sealant from Mortar Net Solutions.[™] **A** to bottom underside of corner and press into place.



Step 2

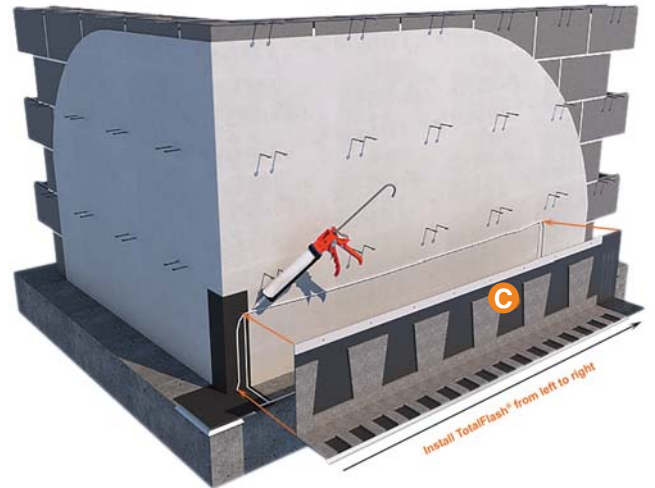
Install pre-formed CompleteFlash 14" High Corner Boot from Mortar Net Solutions.[™] **B** using 1 continuous bead of BTL-1 sealant around the perimeter of the boot. Press the boot firmly into the sealant. To ensure a watertight seal, make sure the sealant bead is thick enough that sealant oozes out around the perimeter of the boot. Trim bottom of boot if necessary so edge of boot is held back approximately 1/4" from the edge of the brick ledge.



Step 3

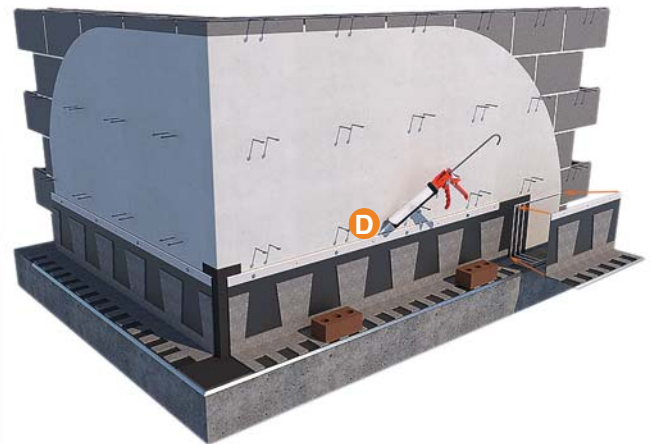
Begin TotalFlash® installation at the leftmost corner using the TotalFlash® starter strip. (On the starter strip, the drip edge extends all the way to the left end of the flashing. One starter strip included in each box.) When long runs of TotalFlash® do not require the starter panel as shipped, the lap can be created by cutting with a knife the glue that holds the drip edge to the membrane and snipping off 6 inches of drip edge. Install starter strip **C** adjacent to corner drip edge using BTL-1 sealant applied horizontally behind termination bar and drip edge and two beads vertically at ends of TotalFlash® panel as shown. Align metal drip edge of TotalFlash® panel with metal corner. Install subsequent sections of TotalFlash® from left to right.

Install the drip edge so it follows the edge of the brick ledge. Push the membrane into the angle where the brick ledge meets the backup wall as tightly as possible. Work the TotalFlash® up the wall creating a smooth tight fit. Attach Termination Bar to the backup wall using supplied self-sealing #14 x 2" screws at a maximum of 16 inches on-center. Screw holes must be pre-drilled with a 5/32 inch drill bit. Screws must extend at least 3/4 inch into the Concrete Masonry Unit (CMU). If the pre-drilled holes in the termination bar do not fall at the desired screw locations, drill new holes through the termination bar as needed.



Step 4

Install remaining sections using the lap system and BTL-1 sealant. Seal top of termination bar **D** with BTL-1 sealant and tool the sealant bead with a slicker to assure a tight seal between termination bar and back wall. Loose brick units can be used to temporarily hold down TotalFlash® while sealant cures.



Step 5

Install Owens Corning® FOAMULAR® Extruded Polystyrene (XPS) Insulation over TotalFlash®. Install the MortarNet® mortar dropping collection device between the rigid insulation and the brick veneer (see MortarNet® Installation Instructions for more detailed information.) Lay a mortar bed directly atop the TotalFlash® weep tabs and install the brick veneer. For proper drainage, ensure the tips of the weep tabs are exposed when tooling the first bed joint.

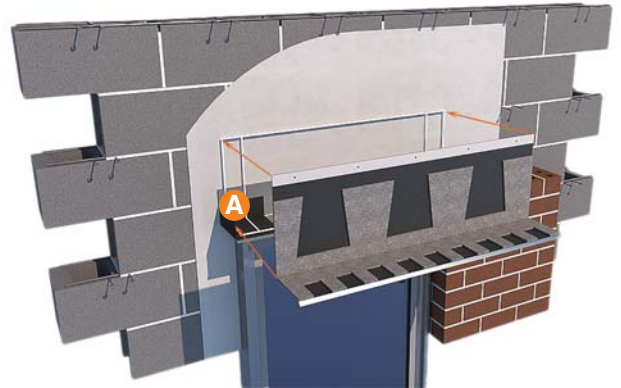


Installation Guide

Window Head Flashing

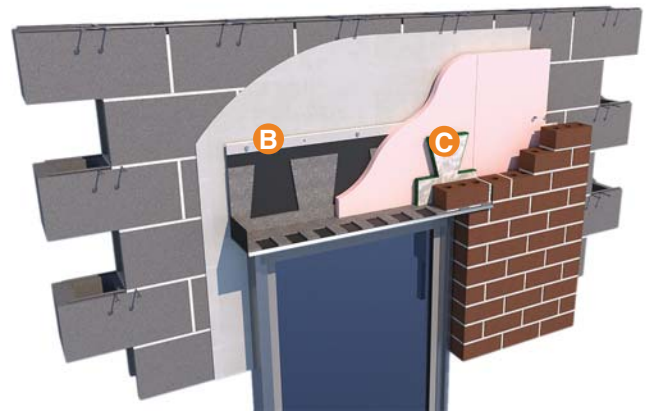
Step 1

Install CompleteFlash pre-formed end dams **A** from Mortar Net Solutions™ using BTL-1 sealant around the perimeter of the end dams. Dry fit and trim if necessary before applying sealant.



Step 2

Install TotalFlash® panel between end dams using sealant and self-sealing screws. Place a bead of sealant at the front of the lintel to seal the drip edge in place. Place sealant around the rest of the perimeter of the TotalFlash® panel as shown in Window Head Flashing Step 1, including two beads on the right and left ends and a bead behind the termination bar. Align the underside of the drip edge where it turns down with the edge of the lintel. Install screws a maximum of 16" on-center. If the opening is wide enough to require more than one TotalFlash® panel, work from left to right and overlap panels as described in Step 4 above. Trim TotalFlash® to fit the opening or have panels pre-manufactured to fit. TotalFlash® may be ordered pre-cut to fit all wall openings at no charge. Free bid, detailing and installation help is available from Mortar Net Solutions. Seal the top of termination bar **B** with BTL-1 sealant and tool the sealant bead with a slicker to assure a tight seal between the termination bar and back wall. Install FOAMULAR® Extruded Polystyrene (XPS) insulation on top of TotalFlash®. Lay the first one or two courses of brick on the lintel, then place a row of MortarNet® between the insulation and the brick **C** as shown. Install the rest of the veneer.



The CavityComplete® Concrete Masonry Unit (CMU) Wall System excludes the masonry veneer and concrete masonry units. A detailed list of the components is available at www.CavityComplete.com.