

MortarNet® with Insect Barrier™



General Installation Details

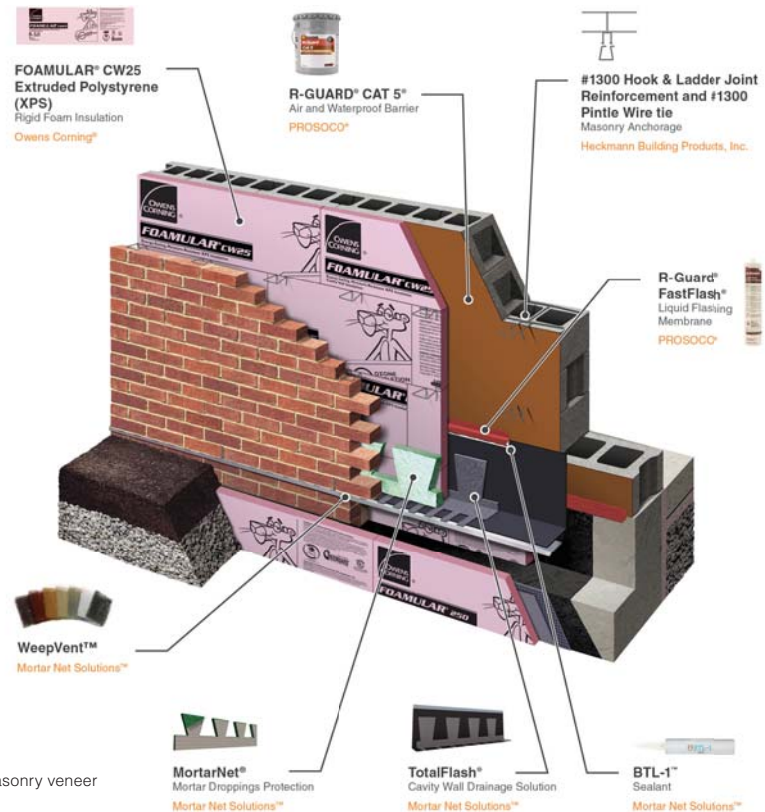
Lay the first one to two courses of brick. Place a continuous row of MortarNet® with Insect Barrier™ in the cavity or collar joint on flashing (trapezoidal side up) against inside of outer wythe at base of wall with Insect Barrier™ fabric facing exterior of building (see diagram).

Install MortarNet® with Insect Barrier™ directly on the flashing at the base of the wall, over all wall openings, shelf angles, sills and lintels.

Install MortarNet® with Insect Barrier™ at every floor level. For wall cavities that exceed 11' in height, place an additional continuous trapezoidal strip on wall reinforcing anchors/ties at every 9' to 11' of wall height.

If 1" or 2"-thick MortarNet® with Insect Barrier™ is used, allow no more than 1/4" of empty space between MortarNet® with Insect Barrier™ and cavity's inside surfaces (Owens Corning® FOAMULAR® Extruded Polystyrene (XPS) and brick). If 0.4 (10mm) MortarNet® with Insect Barrier™ is used alone without other thicknesses, the material should touch the cavity's inside surfaces. 0.4"-thick MortarNet® with Insect Barrier™ can be used as filler with other thicknesses of MortarNet® with Insect Barrier™. When using multiple thicknesses of MortarNet® with Insect Barrier™, place the trapezoidal sections up and align them with each other, and position the insect barrier fabric on all sections facing the exterior of the building. MortarNet® with Insect Barrier™ is compressible to allow for variations in wall-cavity widths.

MortarNet® with Insect Barrier™ should be installed only by experienced masons in properly specified weep hole/flashing systems.



The CavityComplete® Concrete Masonry Unit (CMU) Wall System excludes the masonry veneer and concrete masonry units. A detailed list of the components is available at www.CavityComplete.com.