



M720 EXCEL IN DEEP DRAW & COMPLEX SHAPE MOLDING

M720 chopped strand mat represents a compelling solution for deep draw and complex molding processes with highly filled resin systems.

- Produced with patented Advantex® corrosion resistant E-CR glass by Owens Corning.
- Made of fine-medium tex multi-chop strands randomly dispersed and bonded together with a highly soluble polyester powder binder.

Product Benefits

Easy handling and moldability

- Optimized bonding and chop length mix bring high conformability and easy hand tearing for tailored shapes.

Process efficiency

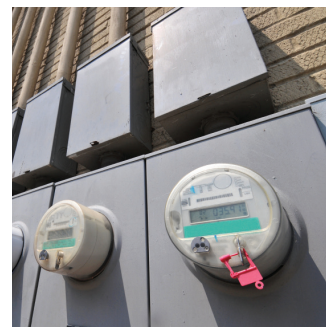
- Fast wetting and quick air release maximize molding productivity.
- Excellent weight uniformity helps laminate consistent thickness.

Enhanced service life

- Compared to standard E-glass, Advantex® glass helps with enhanced service life in applications facing corrosion.

Application

M720 mat is designed for hand lay-up process with polyester, vinyl ester resin systems. Applications include deep draw and complex molding with highly filled resin systems and matched metal die wet molding, for use in rail transport or di-electrical part manufacturing.



Availability

M720 is available in North America. Additional weights and widths are available upon request by your Owens Corning contact.

NOMINAL MAT WEIGHT (OZ/FT ²)	ROLL WIDTH (IN)
1.5 - 2.0 - 3.0	38 - 50 - 60

Packaging
(Standard Reference)

Each roll is wound on a 4" internal diameter cardboard tube and fully enclosed in Cling-Pak® wrap. 16 rolls are positioned vertically on each pallet, banded with tape and Cling-Pak® wrapped for stability and protection.

NOMINAL MAT WIDTH (IN)	ROLL DIAMETER (IN)	ROLLS PER PALLET	PALLET SIZE (IN)
38 - 50 - 60	11 1/4	16	45 x 45

Labeling

Each roll bears a label detailing the product description, product code, nominal weight, roll width, roll number and date of manufacture.

Storage

Unless otherwise specified, it is recommended to store glass fiber products in a cool, dry area. Ideal conditions are at a temperature between 10°C and 35°C and a relative humidity between 35% and 85%. The glass fiber products must remain in their original packaging material until the point of usage. If the storage temperature is below 15°C, it is recommended that the product be stored in the workshop, within its original packaging, at least 24 hours prior to use to help prevent condensation. The packaging is not waterproof. Be sure to protect the product from the weather and other sources of water. When stored properly, there is no known shelf life to the product, and retesting is advised after three years from the initial production date to insure optimum performance.



Americas
Owens Corning Composite Materials, LLC.
One Owens Corning Parkway
Toledo, Ohio, USA 43659
1-800-GET-PINK®
<https://www.owenscorning.com/composites> | Composites@owenscorning.com

This information and data contained herein is offered solely as a guide in the selection of product. We believe this information to be reliable, but do not guarantee its applicability to the user's process or assume any responsibility or liability arising out of its use or performance. The user agrees to be responsible for thoroughly testing any application of the product to determine its suitability. Because of numerous factors affecting results, we make no warranty of any kind, express or implied, including those of merchantability and fitness for a particular purpose. Statements in this publication shall not be construed as representations or warranties or as inducements to infringe any patent or violate any law, safety code or insurance regulation. We reserve the right to modify this document without prior notice.
Image copyright: Istockphoto.com (electrical boxes); aragami12345s / shutterstock.com (yacht). Images for application illustration only.
Pub number: 10010493-A. M720_CSM_product data sheet_americas_11-2018_Rev3. December 2018. English.
THE PINK PANTHER™ & © 1964–2018 Metro-Goldwyn-Mayer Studios Inc. All Rights Reserved. © 2018 Owens Corning. All Rights Reserved.